

SK

SK SERIES CATALOG

BOSS and general :TAO SHANGGUAN
Tel: +86-15800365864
URL: www.shtopview.com
E-mail: info@shtopview.com
Add: Room 605, Building No. 1 of Intellectual Park,
No. 19 West Hulan Road, Baoshan District, Shanghai,
China Zip: 200436

SUPER SERIES

LS-7DE

Excellent optics
with 1.4 times the resolution
of conventional slit lamps
World's top experts' choice.



- 100% beam splitter

Eyepiece observation: 100% beam splitter, 1.7 times resolution better than traditional 4/6 beam splitting
Photographic capture: 100% beam splitter, 2.5 times performance of image captured better than traditional 4/6 beam splitter.

- Confocal flash compensation

Observation and flash compensation light source adopt the same optical path design, imaging on the same observation focal plane together.
Can use a very weak light source to carefully check focus.
Light compensation is provided to obtain high-quality images.
Comfort of the examinee is greatly improved.

- Front-mounted aperture

Effectively enhance the depth of field, observation effect has high synchronization with the shooting effect.

- Dual Backlight

Flash independent + coaxial background light design.
Provide independent angel and bright supplementary light source for taking photos.

- All the features of the LS-7 and LS-7DS models

LS-7DS



- Front-mounted aperture

Effectively enhance the depth of field, observation effect has high synchronization with the shooting effect.

- Chassis infinitely dimmable

Main and background light brightness adjustment knob are on the base Adjust the light source brightness while operating the joystick with one hand at the same time.

- All the features of the LS-7 model

LS-7



- Light source system

Warm LED light source, observe eye tissues and lesions easily.

Long life of 50,000 hours, no need to replace the light source regularly;

PWM brightness control

Use PWM to control the brightness of light source, keep the light color always stable no matter the degree of brightness

- Filtering Infrared and Ultraviolet Light

Filtering infrared and ultraviolet light through optical lens
Reduce damage to eyes of examiners and examinees

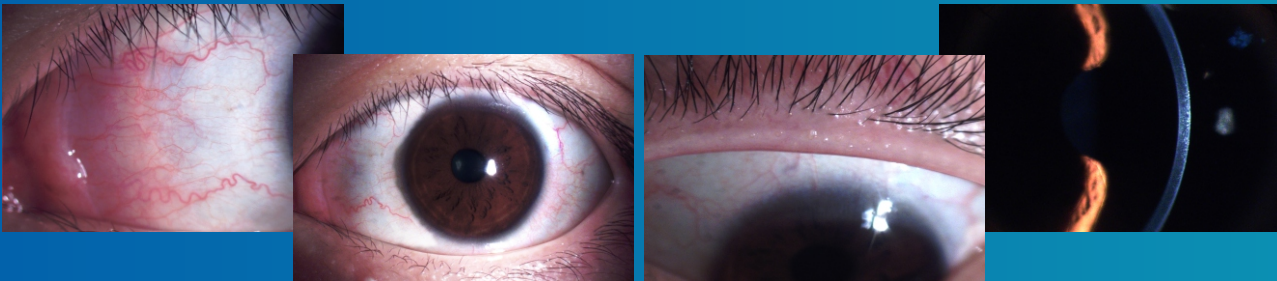
- Flexible joystick

With unique separated design
Effectively counteract reaction force when sliding

• Pictured with optional stereo zoom

UPGRADE SERIES

Better optical effect
1.15 times optical transparency better than
traditional one



LS-9

- 15% Optics Update
- Haag-streit Type
- Built-in Filter to Remove Infrared&Ultraviolet Light
- 5-Steps Magnification
- PWM Brightness Control



LS-9C

- Super Deep Depth Of Field
- Haag-streit Built-in Yellow Filter
- 5-Steps Diaphragm



LS-9D

- 5-Steps Diaphragms
- Built-in Yellow Filter
- 15% Optics Update
- Built-in Filter to Remove Infrared&Ultraviolet Light
- PWM Brightness Control
- Professional Image Packing&Manage Software

	LS-9	LS-9C	LS-9D
Illumination Type	Haag-Streit Type		
Magnification	6X,10X,16X,25X,40X		
Slit Width	Continuous from 0 to 14 mm		
Slit Length	Continuous from 1 to 14 mm		
Light Source	Warm LED		
Image Capture	/	CCD	24 MP SLR

BASIC SERIES



LS-8

- 15% Optics Update
- Zeiss Type
- 5-Steps Magnification
- PWM Brightness Control



LS-5

- Integrated Auto-Adaptation System Professional Image
- Packing&Manage Software



LS-8C

- 6.3MP CCD Capture
- 5-Steps Diaphragms
- Built-in Yellow Filter
- 15% Optics Update
- Professional Image Packing&Manage Software



LS-5C

- Super Deep Depth of Field
- PWM lighe Control
- Coaxial Background light
- Professional Management Software

LS-8	LS-8	LS-8C	LS-5	LS-5C	LS-4	LS-3
Illumination Type		Zeiss Type	Haag-Streit Type			
Magnification		6X,10X,16X,25X,40X				10X,16X,25X
Slit Width		Continuous from 0 to 14 mm				
Slit Length		Continuous from 1 to 14 mm				
light Source		Warm LED				
Image Captyre	/	CCD	SLR	CCD	/	/



LS-3/4

- Revolving Drum
- Continuous Illumination Control
- PWM Brightness Control
- 4mm Aperture
- Reserved Interface for Laser
Applanation Tonometer and Digital System

DRY EYE ANALYSIS

DA-3



- compact size

Specialized examination and analysis equipment
Compact size, more convenient operation
The most professional dry eye clinic for you right now

- CCD Capture

Professional CCD capture, clear observation of follicles and gland openings
Greater depth of field, picture is uniform and clear

- Universal detection

Supports tear river height, tear film breakup time, lipid layer static analysis, Incomplete blink, lipid layer, ocular redness, gland opening, lid gland imaging, staining analysis

- Fully automated analysis

Advanced AI algorithm, fully automated quantitative analysis with excellent repeatability

- Synthesis report

Graphic test reports show the results clearly and in detail

DA-1



• Deluxe

- multi-functional

Integrated digital slit lamp
Excellent slit lamp optic performance
Wide slit lamps selection is available

- Comprehensive Examination Functions

With 7 dry-eye diagnostic functions

- Fully automated analysis

Advanced AI algorithm, fully automated quantitative analysis with excellent repeatability

- Synthesis report

Graphic test reports show the results clearly and in detail



• Deluxe



• Standard



• Basic

PORTABLE SLIT LAMP

LS-1A/B



- High-performance
- The Better 60° Slit Angle for Observation of Corneal Features
- One-hand Magnification Switch
- 50% Increased Visual Range
- High Illuminance to Meet Outdoor Environment Use

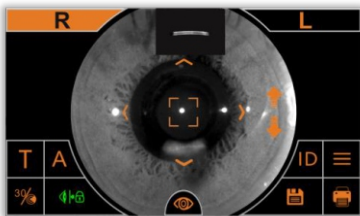


NON-CONTACT TONOMETER

SK-5000A/B



- Full Automatic Measurement
- 3D Auto Tracking
- Rapid Measurement Speed
- Safety
- Soft Air Puff
- SK-5000B supports corneal Thickness Measurement



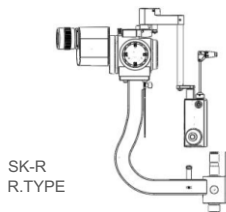
2019/12/25	14:53
ID:	
IOP(mmHg)	AVG
R 42 41 43	42
L 21 22 20	21
PACH(μm)	AVG
R 56 55 57	56
L 28 29 27	28

APPLANATION TONOMETER

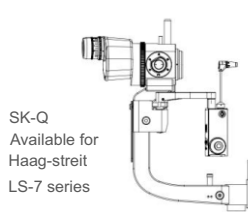
SK-R/Q/T



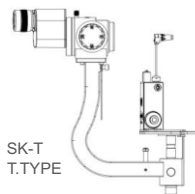
- High Accurate Design
- Digital display+Mechanical Reading
- Kpa,mmHg Measurement Switching
- Measurement Data Locking
- Auto Sleep
- Overlimit Alarm



SK-R
R.TYPE



SK-Q
Available for
Haag-streit
LS-7 series



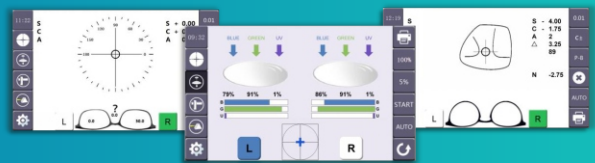
SK-T
T.TYPE

AUTO LENSMETER

SK-1000A/B



- Rapid Measurement Speed with Innovative Fast-processing System
- 7-inch Color LCD,High-pixel Touch Screen
- Convenient Software Operation
- Green Ray Transmittance Measurement with Lens UV Display



FUNDUS CAMERA

SK-680A

Obtain both eyes fundus images in one click,
best choice for screenings and physical exam.



- Fully automatic focusing
- 133° full circle image
- Fluorescent imaging
- ±25D refractive compensation
- AI-assisted diagnosis

• All In One

All-in-one excellent design, large touch screen display,
printer directly connected.

• Comfort Flash

Extremely weak flash, will not stimulate the
examinee' s eyes, easily to cooperate for examinee,
comfortable examination process.

SK-660A



• Auto-Focus, Auto-Capture

Based on optical split-line to auto-focus and
auto-capture, high quality image guaranteed,
easily obtain clear fundus images.

• Split line focus

According to international mainstream split-line focusing method.
Objective and precise judgment of focus through optical principles.
Capture clear images from manual and automatic shooting easily.

• Anterior-posterior switch

Find fundus according to international mainstream
anterior-posterior switching method.
According to anterior alignment point to locate
the fundus position easily.
Get anterior image to enriches the report.

• Support for AI docking

SK-650B



• multifunctional

Capture fundus image without mydriasis,supports color
photographs,dynamic FFA,flash FFA,blue light FFA.

• Visible Light Alignment

Visible halo indicates aligning focus is to find the peripheral
locations easily during radiography.

• Swing body design

Horizontal turning angle ±30°, up and down turning angle ±12.5°.

• Split line focus

ULTRASOUND SERIES

SK-3000A

A-scan, B-scan and Pachymetry, three in one, provide excellent ultrasonic images.



- **Closed-Loop Magnetic-Driven Probes**
Domestic exclusive closed-loop magnetic-driven B ultrasonic probe, no noise, no vibration feeling.
- **Rear Gain Adjustment**
Save 106 ultrasonic images with different gains in single freezing instant.
- **Echo Enhancement**
Unique vitreous echo enhancement feature does not miss any lesion.
- **Host computer transmission**
Faster data transfer and smoother operating experience

SK-2000AP



- **High precision design**
Perfect A ultrasonic with 10 MHz frequency, ensuring deeper detection depths and higher resolution.
- **Multiple measurement modes**
Six crystal modes for more patient populations; automatic and manual measurement methods meet different clinic needs.
- **Ultra-High Precision Corneal Thickness Measurement**
20M ultra-high frequency, more to ensure the measurement accuracy.
- **6.5-inch color touch screen**

FUNDUS IMAGING SYSTEM

SK-8000A/B/C



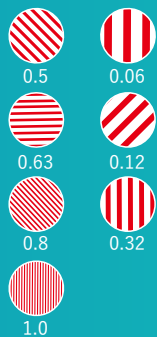
- Great field of vision
- Portable handle design
- Examine very fast
- Small size, easy to carry

RETINOMETER

SK-6500A/B



RANGE OF VISION



- Preoperative vision
- Postoperative vision recovery evaluation
- Range of vision up to 1.0
- Range of vision up to 1.0
- Light source

VISUAL ELECTROPHYSIOLOGY

SK-4000A/B



- Strong Antijamming Capability with Perfect Stability
- Long-M Sequence Design Extracts Accurately Waveform From AnyPosition(For Multifocal)
- Universal Support of Flicher Stimulator
- Impedance Display Shows Directly Electrode Paste Effects
- Complete All Programs by One Interface

PROJECTION PERIMETER

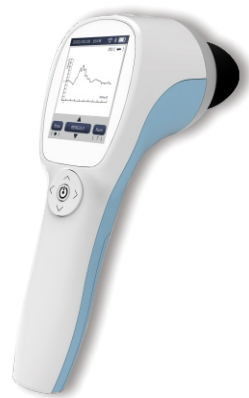
SK-950B/C



- Auto-Calibration
- Single LED
- Spot Control by Optical Progressive Lens
- Embedded System
- MULTI-FUNCTION
DICOM;Voice prompts;
Eye View;Doubt point retest;
Binocular contrast report(2 in 1)

PORTABLE ELECTROPHYSIOLOGY

SK-4500A



- Specialized skin electrodes
- Real-time pupil tracking
- Multiple test options
- Convenient information storage

HEADSET PERIMETER

SK-990A/B



- The brightness of the spot is 3000, and the standard inspection distance is 300mm
- Coaxial fixation adjustment display
- The center of the field of view is $\pm 35^\circ$
- ± 600 diopter adjustment
- Simultaneous inspection of both eyes, real-time eye position playback, and retesting of doubt points

>>> COMING SOON >>>

3D TOPOGRAPHY

SK-7000A/B/C



- 30,000 analysis points for Placido rings
- 230,400 analysis points for scheimpflug camera
- Three in one: Placido ring + scheimpflug camera + axial length measurement

ARK

SK-6800A/B



- Topography+Domain Biometry+Auto
- Refract Keratometer
- Fully Auto 3 in 1

OCT FOR ANTERIOR SEGMENT



- SS-OCT Fully automatic and fast to get high-definition images
- Scan depth $\geq 12\text{mm}$
- Image processing time $\leq 2\text{s}$

SPECULAR MICROSCOPE



- Eye position tracking
- Panorama view mode
- Automatic endothelial
- Trend analysis
- Analysis of dark area
- Double image comparison

OPTICAL BIOMETRY

SK-9900A/B



- All-optical frequency-domain biometric instrument
- Axial length measurement, corneal curvature measurement, and corneal topography detection three-in-one.
- Automatically measure the axial length of the eye.

